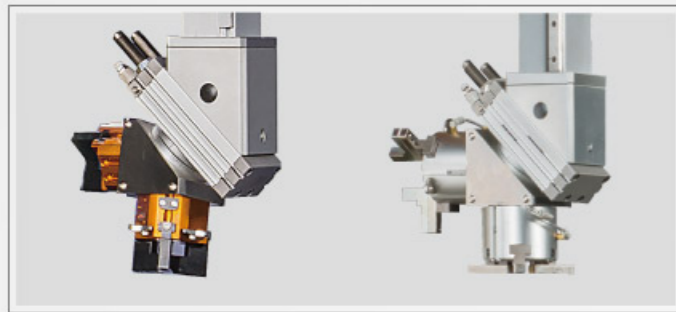
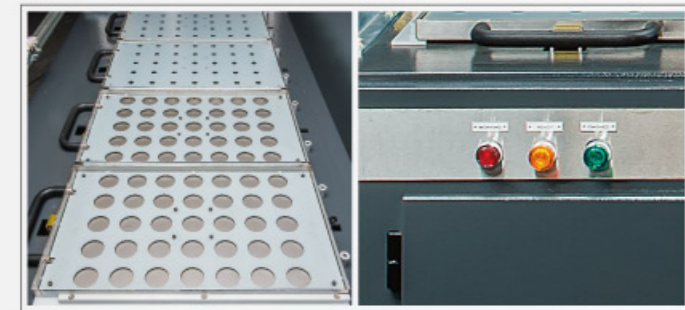


STANDARD / OPTIONAL 標準配備 / 選購配備



**Pneumatically Operated Gripper Rotation
氣壓式夾具旋轉**

- ▶ Gripper rotation is driven by a pneumatic rotary cylinder.
- ▶ Gripper rotating angle: 180°
- ▶ 夾具旋轉採用氣壓迴轉缸驅動。
- ▶ 夾具旋轉角度：180°



**Pallet-Type Parts Loader Working Safety Indication Lamps
擱板式置料裝置 工作安全指示燈**

The three-color indication lamps show pallet locking and working status, making working operations easier and safer.
本三色安全指示燈，具有安全鎖定拖盤與工作指示作用，操作者更加容易辨視與增加工作安全性。



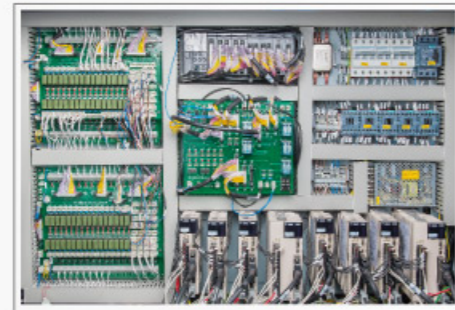
**Parts Conveyor
成品輸送帶**

**Stack-type Parts Loader
素材輸送帶**



**B-axis
B 軸**

- ▶ B-axis rotation is driven by Japanese servo motor.
- ▶ B-axis rotating angle: 0°~360°.
- ▶ Specially designed for twin spindle lathes.
- ▶ B軸旋轉採用日本伺服馬達驅動。
- ▶ B軸旋轉角度：0°~360°。
- ▶ 特別適用於雙主軸車床。



**High Performance Control System
高性能電控系統**

The control system consists of high quality electronic components ensuring maximum dependability of control performance.
電控系統採用高級電子元件組成，控制性能穩定可靠。



**Remote Controller
手控盒**

**MPG Handwheel
MPG電子手輪**

The control system is equipped with a MPG handwheel making arm motions calibration more convenient and accurate.

控制系統附有電子手輪，使手臂動作校準更方便、更精準。



SPECIFICATIONS 規格表

		BR02H	BR02HY	BR02	BR02Y
X-axis Travel	X軸行程(mm)	1200		1350	
Y-axis Travel	Y軸行程(mm)	-	120	-	150
Z-axis Travel	Z軸行程(mm)	800 / 1000 / 1200		800/1000/1200/1400(雙段)	
Workpiece Gripping Diameter(max.)	夾取工件直徑(mm)	Ø20 ~ Ø100		Ø20 ~ Ø120/Ø20 ~ Ø150	
Qty. of Rotary Station(R) / Pallet(P)	迴轉盤數/托盤數	R12 / R16		R10 / R12 / R16	
Pay Load(Single workpiece)	最大夾持重量(單件)(kgf)	3.0		3.0	
X-axis Moving Speed(max.)	X軸移動速度(m/min)	120		120	
Y-axis Moving Speed(max.)	Y軸移動速度(m/min)	-	100	-	100
Z-axis Moving Speed(max.)	Z軸移動速度(m/min)	75		90	
Gripper Rotation Angle	夾具迴轉角度(°)	180°(直角空壓)		180°(直角空壓)/360°(伺服)	
X-axis Servo Motor	X軸伺服馬達(watt)	1000		850	
Y-axis Servo Motor	Y軸伺服馬達(watt)	-	400	-	400
Z-axis Servo Motor	Z軸伺服馬達(watt)	750		400	
Workpiece Flip Device(Standard)	工件翻轉機構	-	-	-	-
Pile-up Storage	倉儲置料	-	-	-	-

		BR03	BR03T1 / BR03T2
X-axis Travel	X軸行程(mm)	1350	
Y-axis Travel	Y軸行程(mm)	500	
Z-axis Travel	Z軸行程(mm)	800 / 1000 / 1200 / 1400(雙段)	
Workpiece Gripping Diameter(max.)	夾取工件直徑(mm)	Ø5 ~ Ø80	
Qty. of Rotary Station(R) / Pallet(P)	迴轉盤數/托盤數	P3	P4
Pay Load(Single workpiece)	最大夾持重量(單件)(kgf)	3.0	
X-axis Moving Speed(max.)	X軸移動速度(m/min)	120	
Y-axis Moving Speed(max.)	Y軸移動速度(m/min)	120	
Z-axis Moving Speed(max.)	Z軸移動速度(m/min)	90	
Gripper Rotation Angle	夾具迴轉角度(°)	180°(直角空壓)/360°(伺服)	
X-axis Servo Motor	X軸伺服馬達(watt)	850	
Y-axis Servo Motor	Y軸伺服馬達(watt)	400	
Z-axis Servo Motor	Z軸伺服馬達(watt)	400	
Workpiece Flip Device(Standard)	工件翻轉機構	Option	
Pile-up Storage	倉儲置料	Option	

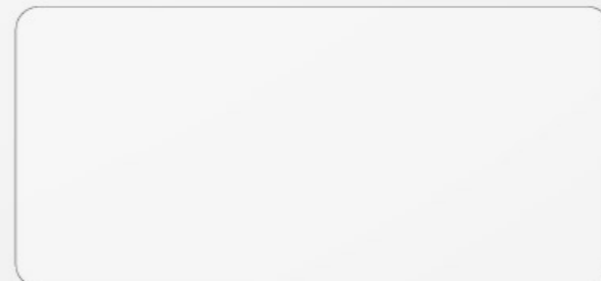


富豪機電股份有限公司 BARLOAD MACHINE CO., LTD.

No. 138, Wei-Hsin Road, Shi-Pai Li, Chang-Hua City, Taiwan 50080
50080彰化市石牌里維新路138號
TEL: +886-4-7384895 FAX: +886-4-7320282
E-mail: info@barload.com.tw

www.barload.com.tw

經銷商 Agent



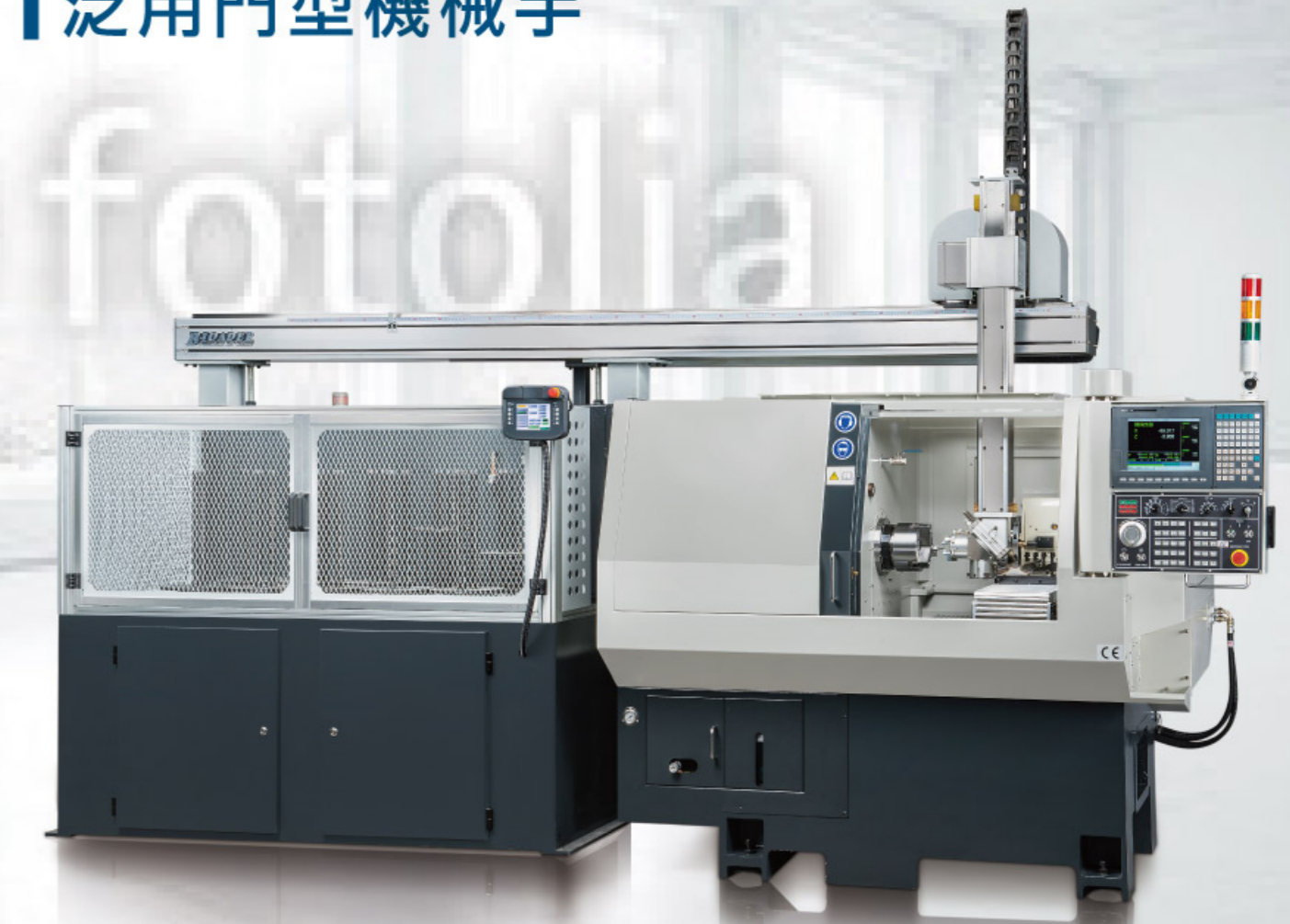
本公司保留設計變更的權利 All Rights Reserved.



www.barload.com.tw

GANTRY LOADER

泛用門型機械手



PATENT 專利
CN201420010904.8
CN201420017259.2
M476670
M472699

161202001411CE

GANTRY LOADER

泛用門型機械手

www.barload.com.tw

MACHINE FEATURES

- ▶ The software of gantry loader is compatible with any controller of CNC lathe.
- ▶ X-axis travel speed reaches 90 ~ 120 m/min.
- ▶ Z-axis travel speed is 90 m/min.
- ▶ Gripper design meets to requests of customers.
- ▶ Rigid structure features maximum stability without vibration at high speed travel.
- ▶ Installed independently, no interference with machining of lathe.
- ▶ Machine height is adjustable with lathe.
- ▶ Loading area is guarded with safety light curtains or doors.
- ▶ Z-axis is designed as telescopic type with 2 stages stroke. Travel quickly and recoce required height of building.(Option)
- ▶ Multi-patents.

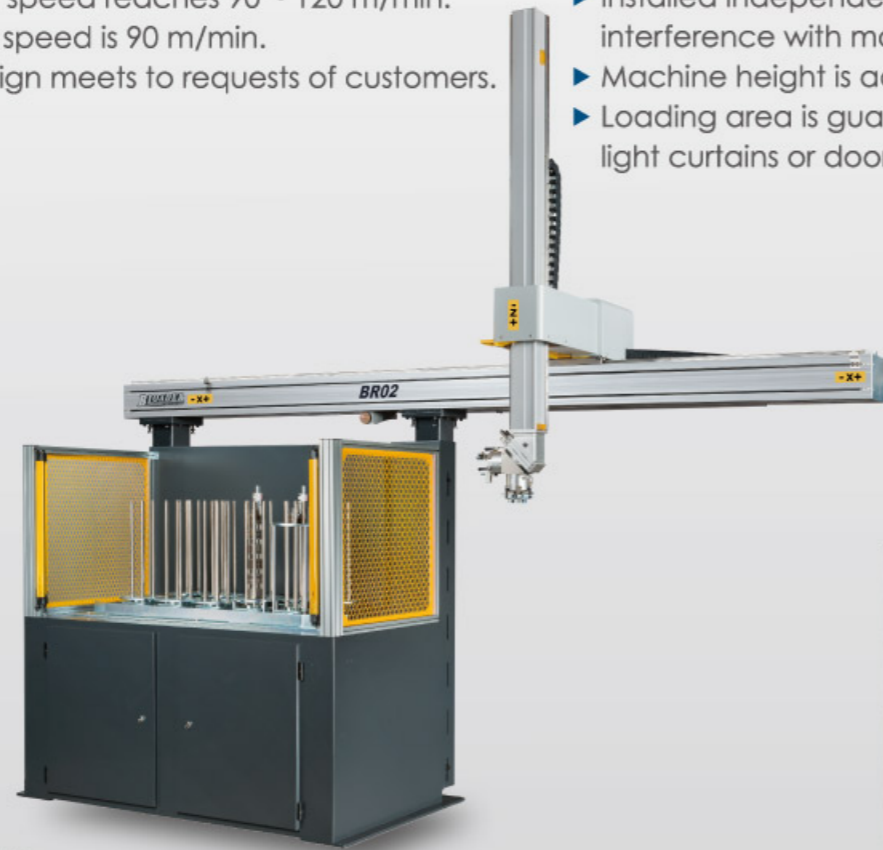
機器特性

- ▶ 機械手軟體可與任何廠牌CNC車床控制器相容。
- ▶ X軸移動速度高達90~120米/分。
- ▶ Z軸移動速度90米/分。
- ▶ 夾具可依客戶工件型式製作。
- ▶ 高剛性機體結構，快速移動時機體穩定。機體與車床獨立，不影響車床加工物。
- ▶ 高度可依車床型式調整。
- ▶ 置料區備有光柵或安全門保護。
- ▶ 雙節式Z軸(選配)，可降低廠房高度需求，同步之雙段行程，快速且精確。
- ▶ 多國專利。



BR02H

- ▶ Rotary stack storage.
- ▶ 2 axis controlled gantry loader.
- ▶ X, Z-axis are driven by servo motors, featuring fast movement and high positioning accuracy.
- ▶ X, Z-axis slideways are mounted with linear motion guides.
- ▶ Clamping capacity is from Ø20mm to Ø100mm within 3 kgf.
- ▶ Parts Conveyor. (Option)
- ▶ Optional Y axis varies with lathe source.
- ▶ 迴轉盤堆疊工料。
- ▶ 2軸控制機械手。
- ▶ X,Z軸採用伺服馬達驅動。動作快速、定位精準。
- ▶ X,Z軸滑道配置線性滑軌。
- ▶ 適用加工物 Ø20~Ø100。(3 kgf以內)
- ▶ 成品輸送帶。(選配)
- ▶ 依車床不同可加裝Y軸。(選配, BR02HY)



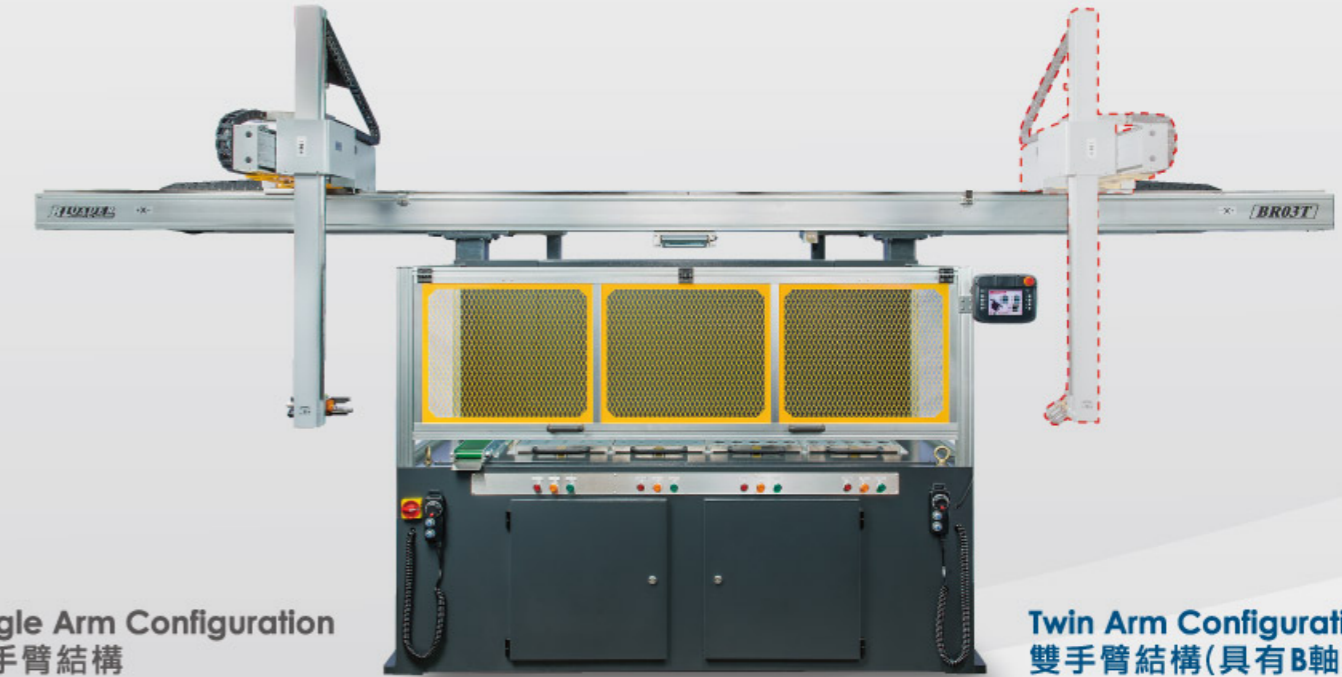
BR02

- ▶ Rotary stack storage.
- ▶ 2 axis controlled gantry loader.
- ▶ X, Z-axis are simultaneously controlled.
- ▶ X, Z-axis are driven by servo motors, featuring fast movement and high positioning accuracy.
- ▶ X, Z-axis slideways are mounted with linear motion guides.
- ▶ Z-axis with telescopic type is applicable. (Option)
- ▶ Rotary cylinder for clamping can be replaced with servomotor. (Option)
- ▶ Clamping capacity is from Ø20mm to Ø150mm within 3 kgf.
- ▶ Optional Y axis varies with lathe source.
- ▶ Parts Conveyor. (Option)
- ▶ 迴轉盤堆疊工料。
- ▶ 2軸控制機械手。
- ▶ X,Z軸同動控制。
- ▶ X,Z軸採用伺服馬達驅動。動作快速、定位精準。
- ▶ X,Z軸滑道配置線性滑軌。
- ▶ Z軸伸縮軸可追加。(選配)
- ▶ 氣壓迴轉缸可更換伺服控制。(選配)
- ▶ 適用加工物 Ø20~Ø150。(3 kgf以內)
- ▶ 依車床不同可加裝Y軸。(選配, BR02Y)
- ▶ 成品輸送帶。(選配)



BR03

- ▶ Tray storage.
- ▶ 3 axis controlled gantry loader.
- ▶ X, Y, Z-axis are simultaneously controlled.
- ▶ X, Y, Z-axis are driven by servo motors, featuring fast movement and high positioning accuracy.
- ▶ X, Y, Z-axis slideways are mounted with linear motion guides.
- ▶ Z-axis with telescopic type is applicable. (Option)
- ▶ Rotary cylinder for clamping can be replaced with servomotor. (Option)
- ▶ Clamping capacity is from Ø5mm to Ø80mm within 3 kgf.
- ▶ Parts Conveyor. (Option)
- ▶ 穴盤置料。
- ▶ 3軸控制機械手。
- ▶ X, Y, Z軸同動控制。
- ▶ X, Y, Z軸採用伺服馬達驅動。動作快速、定位精準。
- ▶ X, Y, Z軸滑道配置線性滑軌。
- ▶ Z軸伸縮軸可追加。(選配)
- ▶ 氣壓迴轉缸可更換為伺服控制。(選配)
- ▶ 適用加工物 Ø5~Ø80。(3 kgf以內)
- ▶ 成品輸送帶。(選配)



Single Arm Configuration
單手臂結構

Twin Arm Configuration (With B-axis)
雙手臂結構(具有B軸)

BR03T1 (Single Arm Configuration 單手臂結構)

- ▶ 3-4 axis controlled gantry loader.
- ▶ X, Y, Z (B)-axis are simultaneously controlled.
- ▶ X, Y, Z (B)-axis are driven by servo motors, featuring fast movement and high positioning accuracy.
- ▶ X, Y, Z-axis slideways are mounted with linear motion guides.
- ▶ Z-axis can be equipped with telescopic function or with servomotor controlled B-axis. (Option)
- ▶ Rotary cylinder for clamping can be replaced with servomotor. (Option)
- ▶ Clamping capacity is from Ø5mm to Ø80mm within 3 kgf.
- ▶ Parts Conveyor. (Option)
- ▶ Flipping device. (Option)
- ▶ 穴盤置料。
- ▶ 3-4軸控制機械手。
- ▶ X, Y, Z(B)軸同動控制。
- ▶ X, Y, Z(B)軸採用伺服馬達驅動。動作快速、定位精準。
- ▶ X, Y, Z軸滑道配置線性滑軌。
- ▶ Z軸伸縮和伺服回轉軸擇一。(選配)
- ▶ 氣壓迴轉缸可更換伺服控制。(選配)
- ▶ 適用加工物 Ø5~Ø80。(3 kgf以內)
- ▶ 成品輸送帶。(選配)
- ▶ 翻轉機構。(選配)

BR03T2 (Twin Arm Configuration "With B-axis" 雙手臂結構 "具有B軸")

- ▶ Tray storage.
- ▶ 6-8 axis controlled gantry loader.
- ▶ X, Y, Z (B)-axis are simultaneously controlled.
- ▶ X, Y, Z (B)-axis are driven by servo motors, featuring fast movement and high positioning accuracy.
- ▶ X, Y, Z-axis slideways are mounted with linear motion guides.
- ▶ Z-axis can be equipped with telescopic function or with servomotor controlled B-axis. (Option)
- ▶ Rotary cylinder for clamping can be replaced with servomotor. (Option)
- ▶ Clamping capacity is from Ø5mm to Ø80mm within 3 kgf.
- ▶ Parts Conveyor. (Option)
- ▶ Flipping device. (Option)
- ▶ 穴盤置料。
- ▶ 6-8軸控制機械手。
- ▶ X, Y, Z(B)軸同動控制。
- ▶ X, Y, Z(B)軸採用伺服馬達驅動。動作快速、定位精準。
- ▶ X, Y, Z軸滑道配置線性滑軌。
- ▶ Z軸伸縮和伺服回轉軸擇一。(選配)
- ▶ 氣壓迴轉缸可更換伺服控制。(選配)
- ▶ 適用加工物 Ø5~Ø80。(3 kgf以內)
- ▶ 成品輸送帶。(選配)
- ▶ 翻轉機構。(選配)